

CLIMP-63 Monoclonal Antibody [G1/296]

(Catalog No. A-0581)

Background

The cytoskeleton-linking membrane protein of 62kDa (CLIMP-63) is a marker for the reticular subdomain of the rough endoplasmatic reticulum (ER) and is excluded from the outer nuclear membrane. Concentration of CLIMP-63 into patches may enhance microtubule binding on the cytosolic side and contribute to ER morphology by the formation of a protein scaffold in the lumen of the ER, linking the rough ER to microtubules.

Description

Mouse monoclonal antibody to CLIMP-63, Clone G1/296

Formulation

Lyophilized

Immunogen

Human CLIMP-63 (cytoskeleton-linking membrane protein of 63kDa) from Caco-2 cells golgi membrane fraction

Uniprot ID

Q07065

Specificity

Human

Isotype

IgG2a

Purification

Protein G-affinity purified

Storage

Store at -20°C. Avoid multiple freeze/thaw cycles.

Application

ELISA, FC, ICC (1:1000), IHC, IP (2 µl), WB (1:1000)

Ordering Information

Products

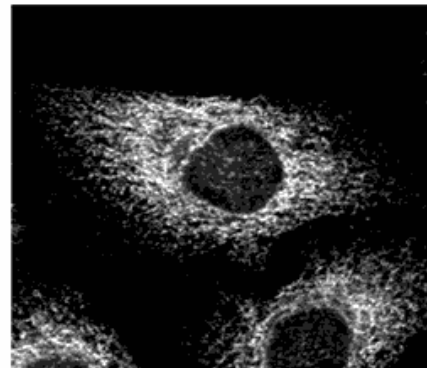
CLIMP-63 Monoclonal Antibody [G1/296]

Size

100 µg

Cat. No.

A-0581-100



▲ Immunocytochemistry using CLIMP-63 Monoclonal Antibody [G1/296] at a 1:1'000 dilution.

This product is for research purposes only. Not intended for use in diagnostic procedures.