

MAT2A Polyclonal Antibody

(Catalog # A72480)

Background

The protein encoded by this gene catalyzes the production of S-adenosylmethionine (AdoMet) from methionine and ATP. AdoMet is the key methyl donor in cellular processes.

Description

MAT2A Polyclonal Antibody. Unconjugated. Raised in: Rabbit.

Formulation

Buffer: PBS with 0.02% sodium azide, 50% glycerol, pH7.3.

Specificity

Human, Mouse, Rat

Isotype

IgG

Uniprot ID

P31153

Purification

Affinity Purification

Immunogen

Recombinant fusion protein containing a sequence corresponding to amino acids 1-395 of human MAT2A (NP_005902.1).

Storage

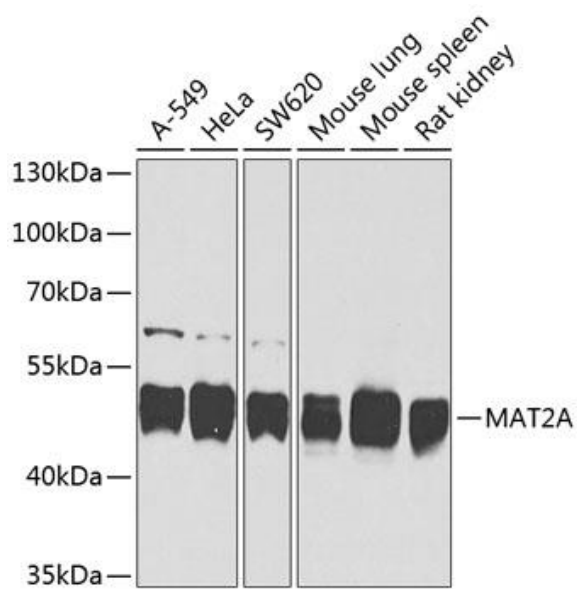
Shipped at 4°C. Upon receipt, store at -20°C. Avoid freeze / thaw cycles

Alternative Names

MAT2A; MATA2; MATII; SAMS2; methionine adenosyltransferase 2A

Application

WB; Recommended dilution: WB 1:500 - 1:2000



Western Blot

Positive WB detected in: Rat brain tissue

All lanes: PEX13 antibody at 3.4ug/ml

Secondary

Goat polyclonal to rabbit IgG at 1/50000 dilution

Predicted band size: 45 KDa

Observed band size: 45 KDa